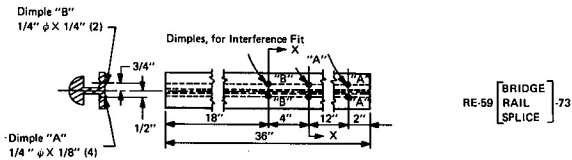
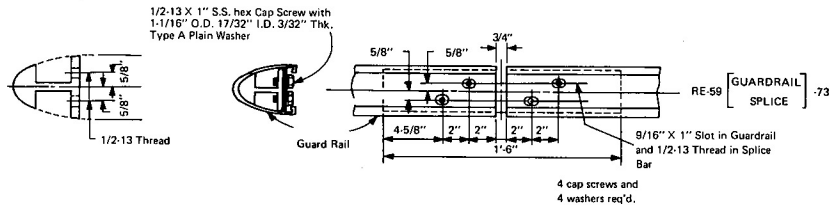


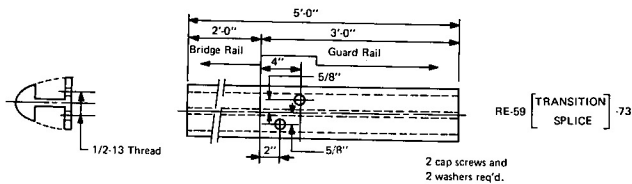
SECTION



BRIDGE RAIL SPLICE BAR



GUARDRAIL SPLICE DETAIL



TRANSITION SPLICE BAR

SPECIFICATIONS

Splice bar shall meet the requirements of A.S.T.M. B221, alloys 6061-T6 or 6351-T5 (minimum elongation 10%); and shall be threaded to meet the requirements of A.N.S.I. B1.1 Class 2B Tolerance.

Cap screws shall meet the requirements of stainless steel A.S.T.M. A276, Type 430; and the dimensional requirements of A.N.S.I. B18.2.1. Washers shall be made of aluminum A.S.T.M. B209, Alloy 2024-T3 clad and shall meet the dimensional requirements of A.N.S.I. B27.2, Type A Plain Washer.

Dimensional tolerances not shown or implied are intended to be those consistent with the proper functioning of the part, including its appearance, and accepted manufacturing practices.

INTENDED USE

This section is used to splice alternate rail RE-58-73 in bridge railing designs BR1 (Aluminum) Type C, BR2A (Aluminum) Type C, BR2 (Aluminum) Type D and BR3A (Aluminum) Type D, in median barrier designs MB8 and MB8B, and in guardrail design G8.

4-3/4" X 4" SEMI-ELLIPSE RAIL SPLICE

HM-TF-13

STANDARD

RE - 59 [DESIGNATE SPLICE TYPE] - 73